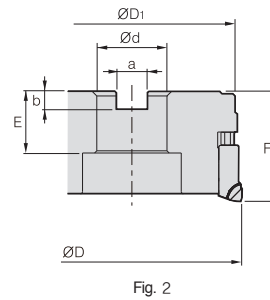
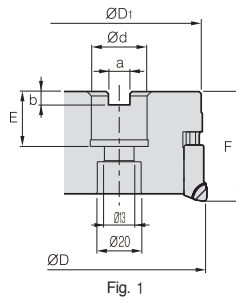
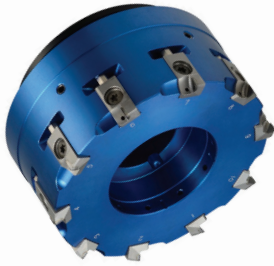


# APD(M)-PB

Blade



AA  
90°

• AR: 6°  
• RR: -4°~1°

Designation		⊙	Max ⊙	ØD	ØD1	Ød	a	b	E	F	ap	kg	Fig.
APD (APDM)	080R/L-PB6Z	6	10	80	77	25.4 (27)	9.5 (12.4)	6 (7)	23.5	50	5	0.55	1
	080R/L-PB8Z	8	10	80	77	25.4 (27)	9.5 (12.4)	6 (7)	23.5	50	5	0.55	1
	100R/L-PB6Z	6	12	100	97	31.75 (32)	12.7 (14.4)	8	34 (32)	50	5	0.92	2
	100R/L-PB8Z	8	12	100	97	31.75 (32)	12.7 (14.4)	8	34 (32)	50	5	0.92	2
	125R/L-PB8Z	8	14	125	122	38.1 (40)	15.9 (16.4)	10 (9)	40 (35)	63	5	1.9	2
	125R/L-PB10Z	10	14	125	122	38.1 (40)	15.9 (16.4)	10 (9)	40 (35)	63	5	1.9	2
	160R/L-PB10Z	10	20	160	157	50.8 (40)	19.0 (16.4)	11 (9)	41 (35)	63	5	3.3	2
160R/L-PB12Z	12	20	160	157	50.8 (40)	19.0 (16.4)	11 (9)	41 (35)	63	5	3.3	2	

( ) Metric size

## Available blades

BAMPR-XAF    BAMPR-XAW    BAMPR-XAWR



Designation	PCD	page
	DP150	
BAMPR-XAF	●	E06
BAMPR-XAW	●	
BAMPR-XAWR		

## Available arbors

Designation	NC arbors
APD-PB (APDM-PB) 080R/L-PB□□Z	BT□□-FMA25.4(FMC27)-□□
100R/L-PB□□Z	BT□□-FMA31.75(FMC32)-□□
125R/L-PB□□Z	BT□□-FMA38.1(FMB40)-□□
160R/L-PB□□Z	BT□□-FMA50.8(FMB/FMC40)-□□

## Parts

Specification						
Ø80-Ø160	ETKA0620	AZ0514-SPN6	UZD1010	KHE0610	SPN-6	TW25-100

Available inserts E06    Available arbors and bolt E400~E402